

Customer :

customer

Customer part :

customer part

Comment :

Comment

S1=4.66

S2=5.51

Tmax=464

Tp S2=503.0

PI=0.46

HI=92

Sample =1680.10

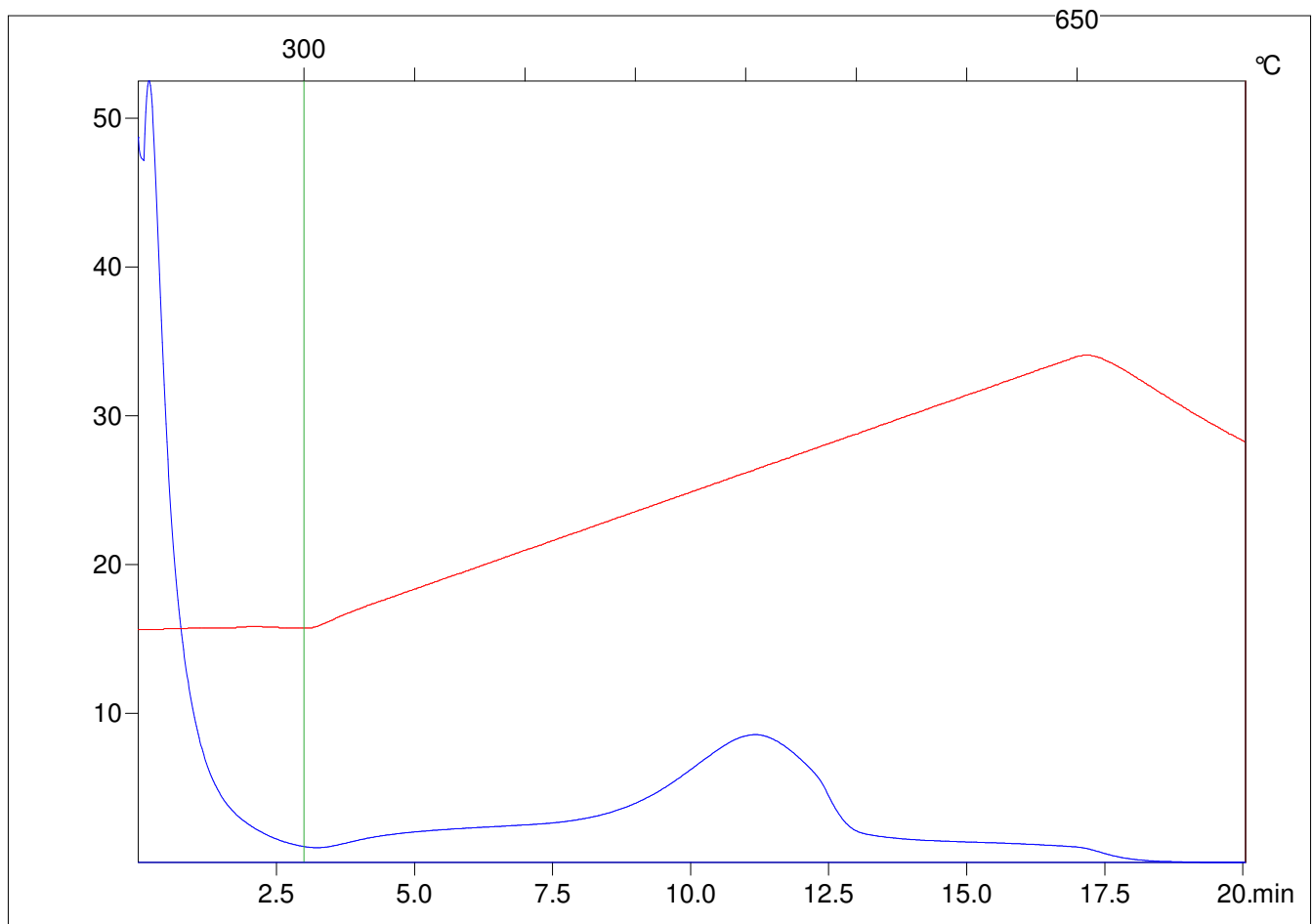
Method =Bulk Rock

Cycle=Basic

KFID(10\*9)=1444

Qty =70.5

TOC=6



C:\VINC\PK1\_1792\PK035.R00 : FID pyrolysis graphic

State

Pyro Status

Oxi Status